



KIELCE
TECHNOLOGY PARK



KIELCE TECHNOLOGY PARK

THE PARK OF FUTURE

www.technopark.kielce.pl

Piotrkowska Street 6
25-510 Kielce
e-mail: technopark@um.kielce.pl

TIN 959-181-50-51

ph. (+48 41) 36 76 385
ph./fax. (+48 41) 36 76 355

INTRODUCTION



Szymon Mazurkiewicz
Director of KTP

Dear Sir/Madam,

These days, technology parks constitute the most advanced and complex institutional form of activating regional development in the direction of economy structures based on knowledge.

They constitute a continually innovative instrument of the modern development policy, shaped on the local and regional level, and their promotion is finding more and more supporters in the world.

Kielce Technology Park is one of the most important economic ventures realised by the City of Kielce. It was designed including the best international models, so that it could support the development of enterprises at each stage of their functioning – from the idea to market expansion.

The venture implemented by the City of Kielce is undoubtedly one of the youngest in Poland, but at the same time one of the most dynamically developing in our country. This will enable consolidation of land in one area of innovative companies, simplifying mutual contacts between entrepreneurs, resulting in creating cooperative connections and attempts at mutual ventures, generating so-called “synergy effects” and development of the innovative environment.

Szymon Mazurkiewicz

Director of KTP

Kielce Technology Park – a multifunctional territory of economic activity, which was created for people who see their future with innovation and new technologies.

KTP is one of the largest economic ventures realised by the City of Kielce, providing complex professional services to technological companies at each stage of their development: from the idea to market expansion.

KTP is perceived as a motor of economic development of the Świętokrzyskie Voivodeship and constitutes the most advanced and complex institutional form of activating regional development, in the direction of economic structures based on knowledge. It aids newly established, innovative companies in achieving maturity and capability to function independently on the market. The KTP personnel serves with knowledge and experience, as well as professional care, adapted to individual needs.

INFRASTRUCTURE OF KIELCE TECHNOLOGY PARK

ZONE I:
Technology Incubator (TI)

ZONE II:
Technology Centre (TC)

Both zones are characterised by modern architecture, technical infrastructure and an interesting interior design. They have also been equipped with necessary media. Furthermore, investors will have free investment areas at their disposal of an area of 20 ha.

AVAILABLE SERVICE – OFFICE – LABORATORY AREA OF KIELCE TECHNOLOGY PARK



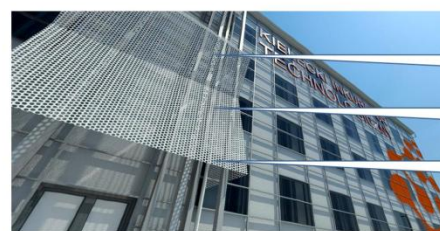
Technology Incubator (TI)

The Technology Incubator
is complex and professional support for
newly established companies.

The assets are well-equipped and attractively
situated infrastructure, preferential conditions of
lease and services for start-ups, as well as
micro-enterprises.

All modules in the *Technology Incubator* have
been fully completed and equipped in basic
office furniture necessary for beginning
business activity. Open space type modules are
exceptions, where each occupant will be able to
create a space adjusted to their individual
needs.

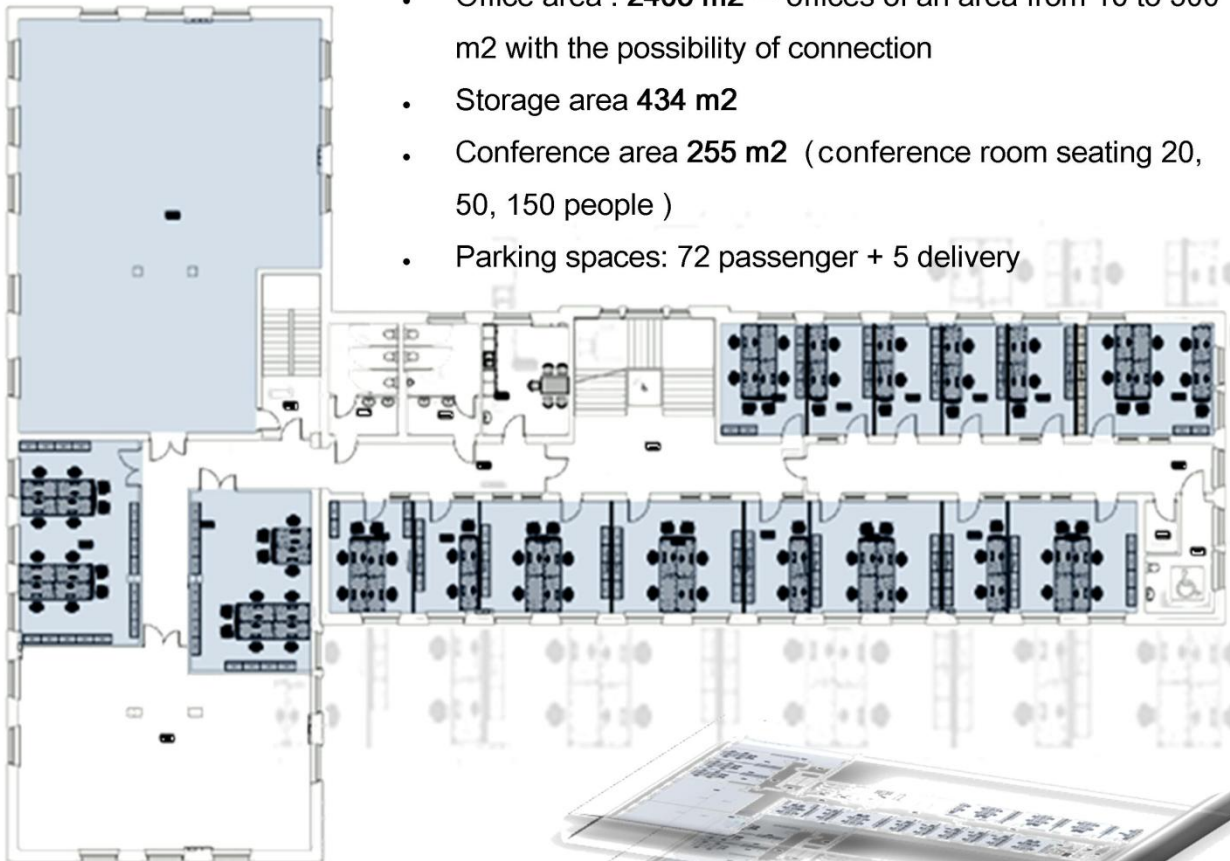
Particularly office areas of incubated enterprises
will be situated in the *Technology Incubator*, as
well as KTP 's administration, representatives
and seats of institutions and companies from
the business assisting surroundings.



Technology Incubator (TI)

4 535 m²

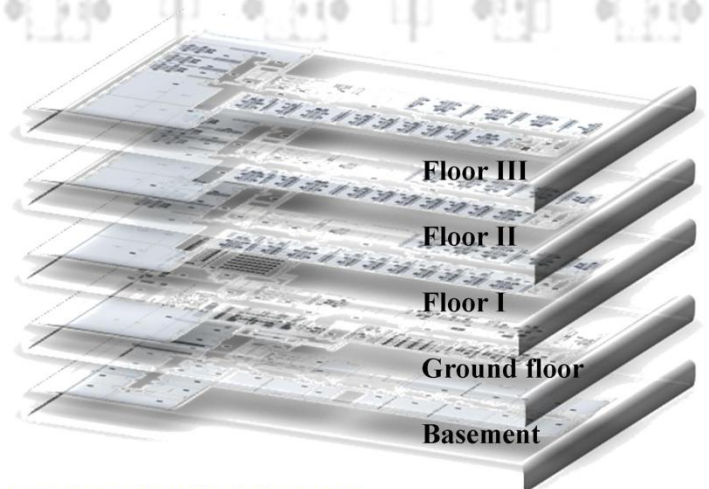
Within the domain of the Technology Incubator, occupants have the following at their disposal:



- Office area : **2405 m²** – offices of an area from 16 to 300 m² with the possibility of connection
- Storage area **434 m²**
- Conference area **255 m²** (conference room seating 20, 50, 150 people)
- Parking spaces: 72 passenger + 5 delivery

The entire area of TI is:

- Administration area
- Common area
- Area of KTP 's occupants



KIELCE TECHNOLOGY PARK
Building:
TECHNOLOGY INCUBATOR

Infrastructure of the KIELCE TECHNOLOGY PARK

ZONE II



Technology Centre (TC)

The Technology Centre is an area for domestic and foreign investors wishing to locate their capital within the Świętokrzyskie Voivodeship, basing their development on innovative solutions in the scope of technologies of production and services.

THE TECHNOLOGY CENTRE CONSISTS OF:

- A PRODUCTION HALL
(USEABLE AREA, PARKING SPACES)
- OFFICE – LABORATORY – PRODUCTION BUILDING
(OFFICE, LABORATORY AND PRODUCTION AREA,
PARKING SPACES)
- INVESTMENT AREAS COMPLETE WITH UTILITIES

AREA: 12 800 m²

Additionally TC has:

- a storage area: 975 m²
- parking spaces: 328 passenger + 20 delivery



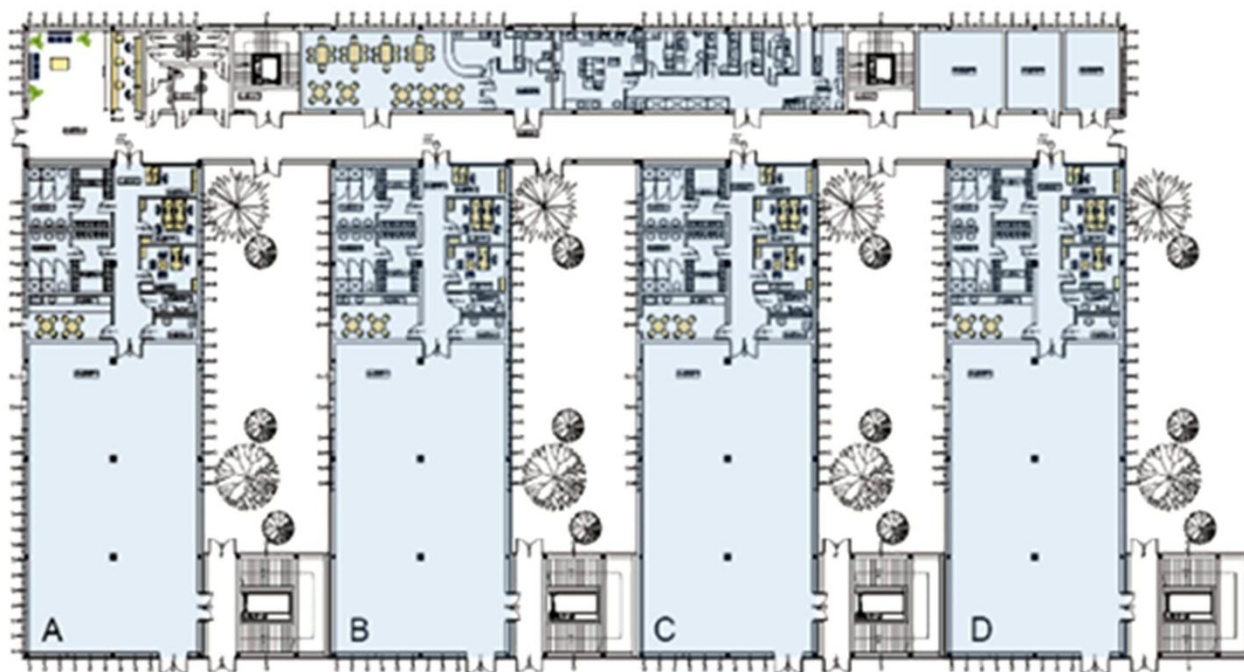
Technology Centre (TC)

OFFICE – LABORATORY – PRODUCTION BUILDING

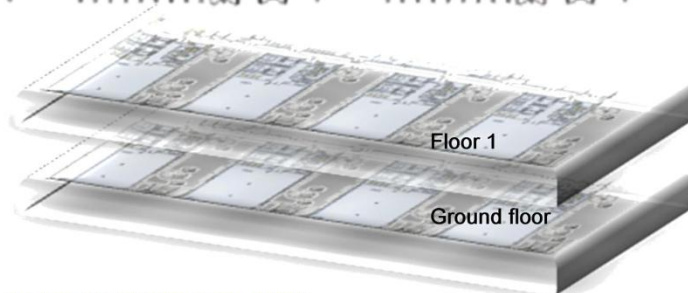


TC OFFICE – LABORATORY – PRODUCTION BUILDING:

- useable area of the entire building: 4 245.62 m²
- office area: 238.50 m²
- production and laboratory area: 3 778 m²



The building has two floors and 8 modules with the possibility of them functioning separately.



KIELCE TECHNOLOGY PARK
Service-laboratory-production building
TECHNOLOGY CENTRE

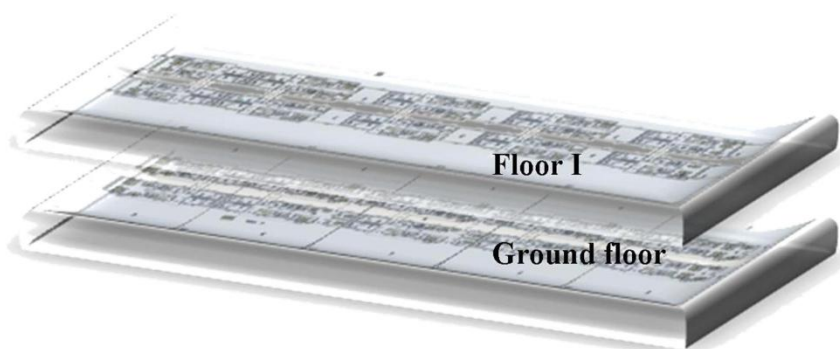
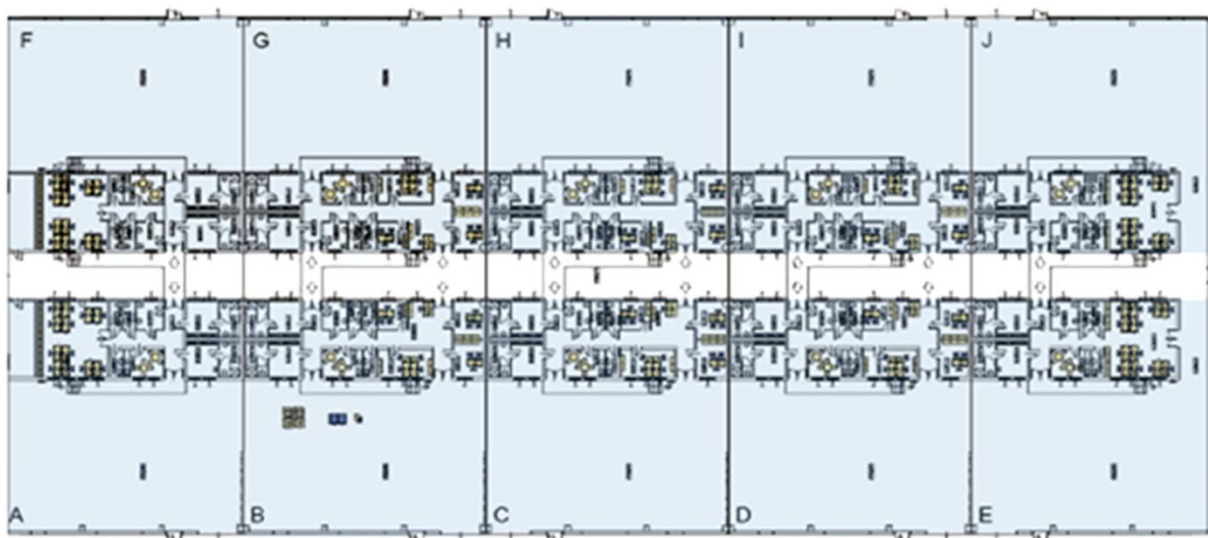


Technology Centre (TC) PRODUCTION HALL



PRODUCTION HALL OF THE TECHNOLOGY CENTRE:

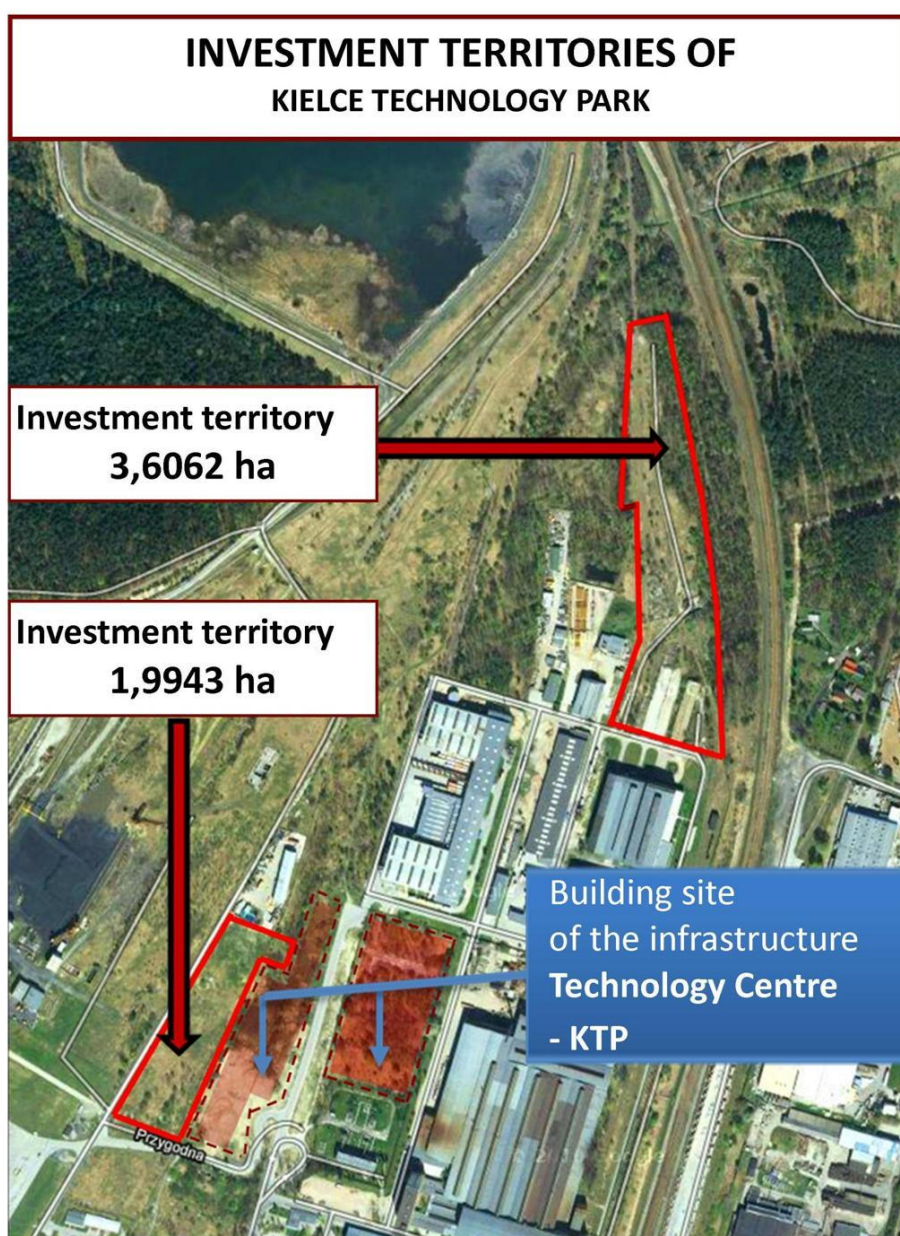
- useable area of the entire building: 6 521.14 m²
- mezzanine area (to be adapted by occupants): 2 053.02 m²



KIELCE TECHNOLOGY PARK
Production Hall
TECHNOLOGY CENTRE



Technology Centre (TC) INVESTMENT TERRITORIES



ADDITIONAL CONVENIENCES

Part of Kielce Technology Park has been included in the Special Economic Zone “**Starachowice**” in order to create convenient conditions for the development of enterprises operating on the basis of new technologies.

Entrepreneurs operating within the SEZ will receive tax exemptions for income tax, based on the terms specified in regulations on income tax. At the same time, entrepreneurs may take advantage of all the incentives used by the state (SEZ), local government (e.g. tax allowance for real estate) and benefits connected with the business within the technology park.

Kielce Technology Park ensures 24-hour physical guarding of objects together with monitoring conducted by an external professional company and maintaining cleanliness of internal roads, parking spaces and clearing them of snow, as well as maintaining green areas at a high standard.

Estimate net cost of renting real estate:

1. Office area – 30-40 PLN/m²
2. Laboratory area – 15-25 PLN/m²
3. Production area – 10-12 PLN/m²
4. Investment territories – to be agreed with the investor.

More at www.technopark.kielce.pl



KIELCE
TECHNOLOGY PARK

Kielce Technology Park

Piotrkowska Street 6

25-510 Kielce

ph. (+48 41) 36 76 385

ph./fax. (+48 41) 36 76 355

e-mail: technopark@um.kielce.pl

www.technopark.kielce.pl

